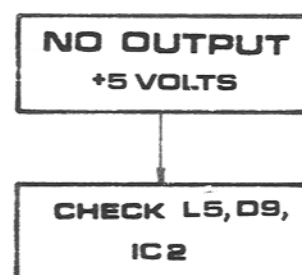
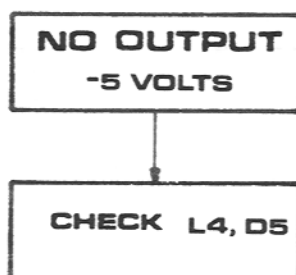
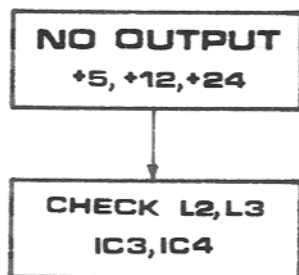
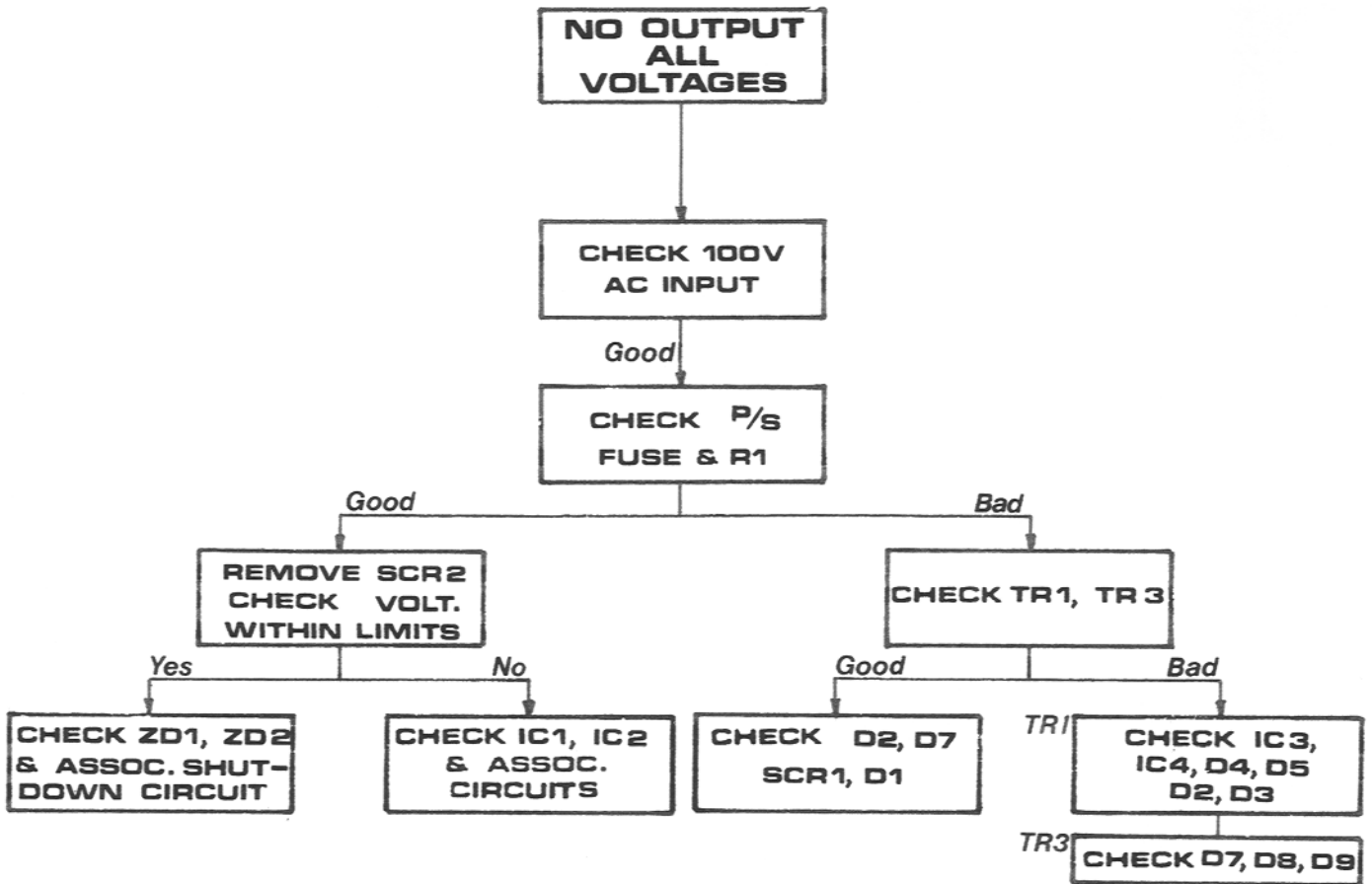
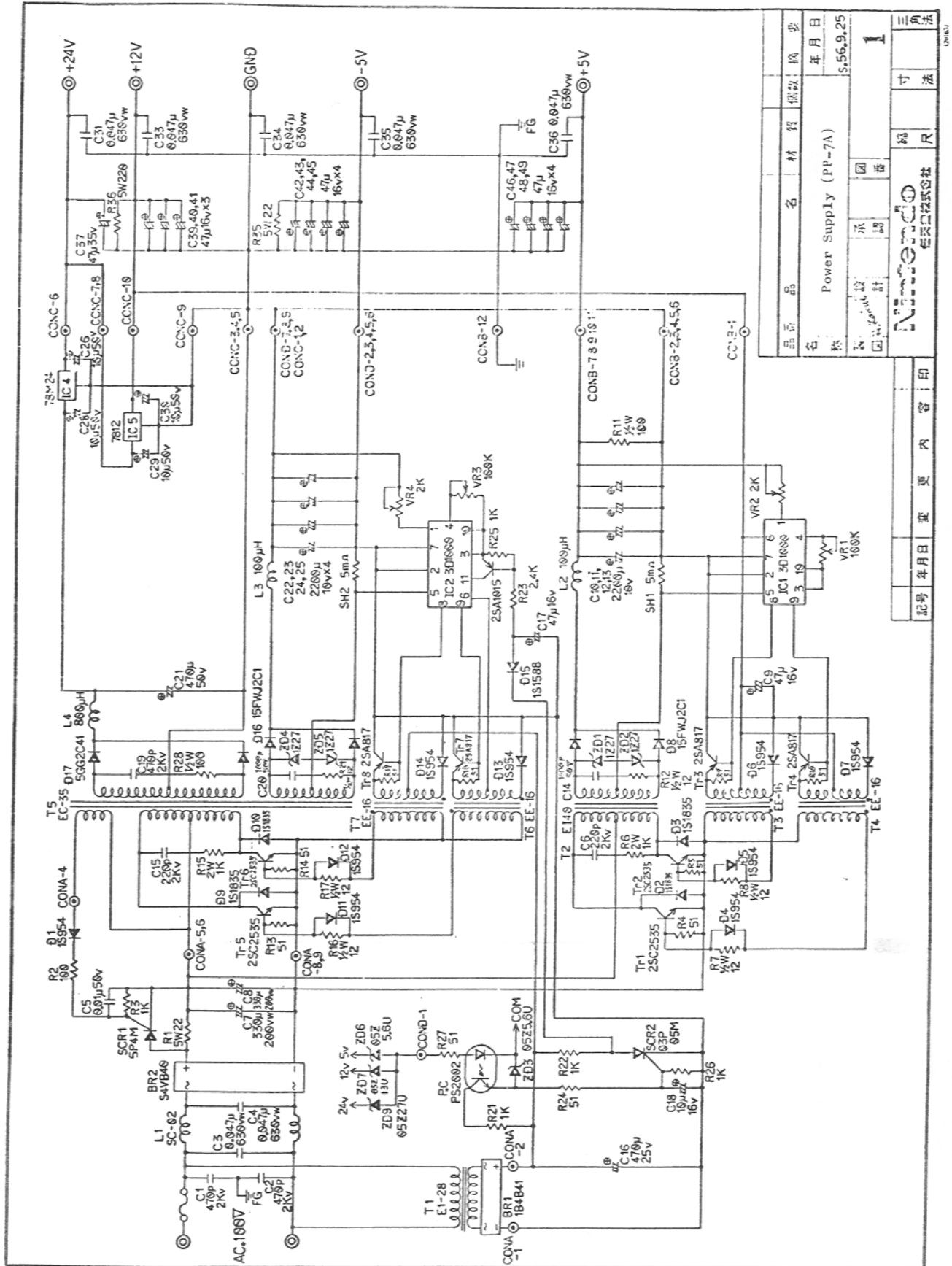


## Trouble Shooting chart for PP-7B

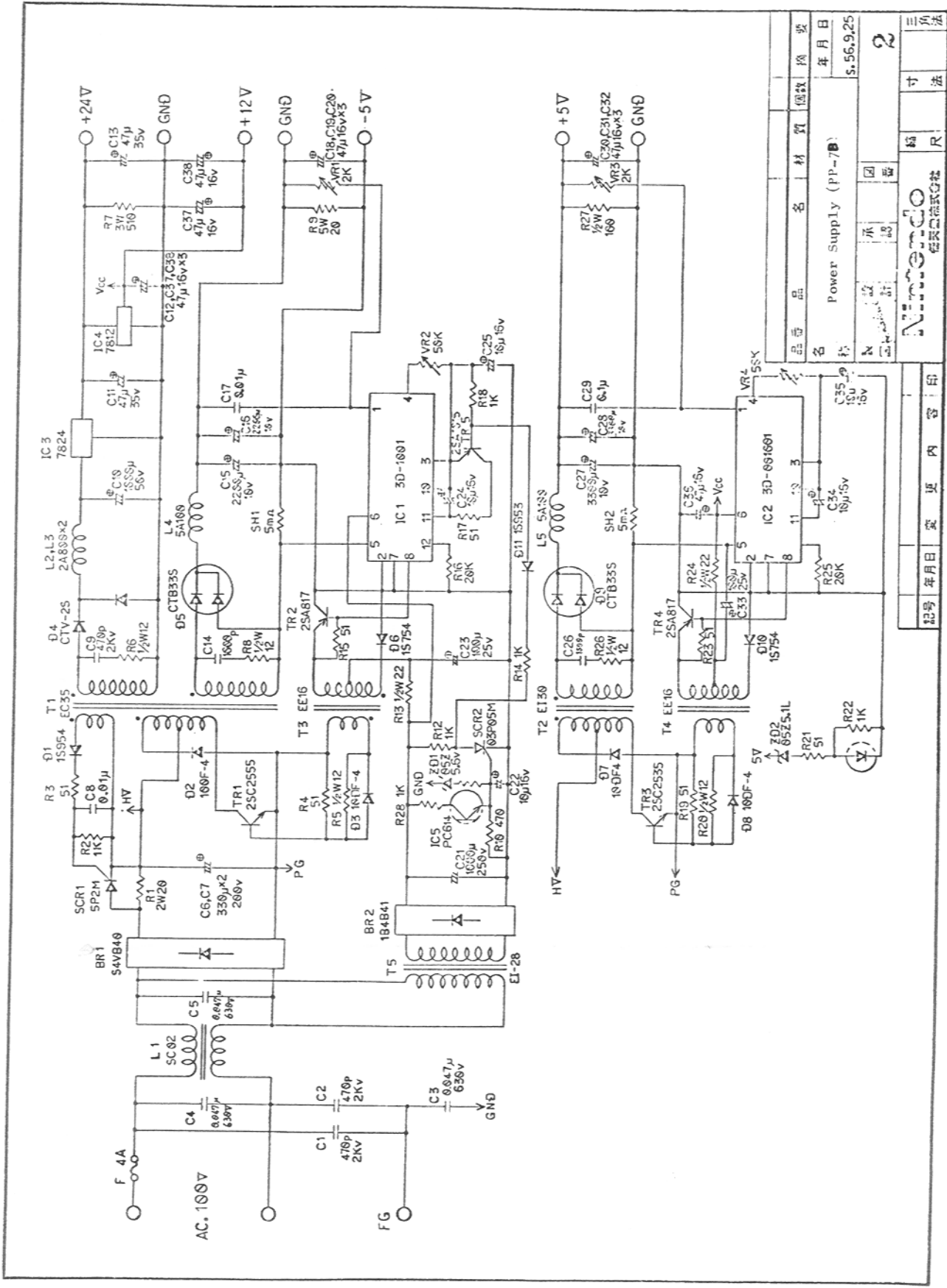


# POWER SUPPLY SCHEMATICS



品名	Power Supply (PP-7A)	版数	1
設計		年月日	5.56.9.25
承認		寸法	
印刷		縮尺	R
Nippono		日本電機株式会社	

記号	年月日	変更	内容	印



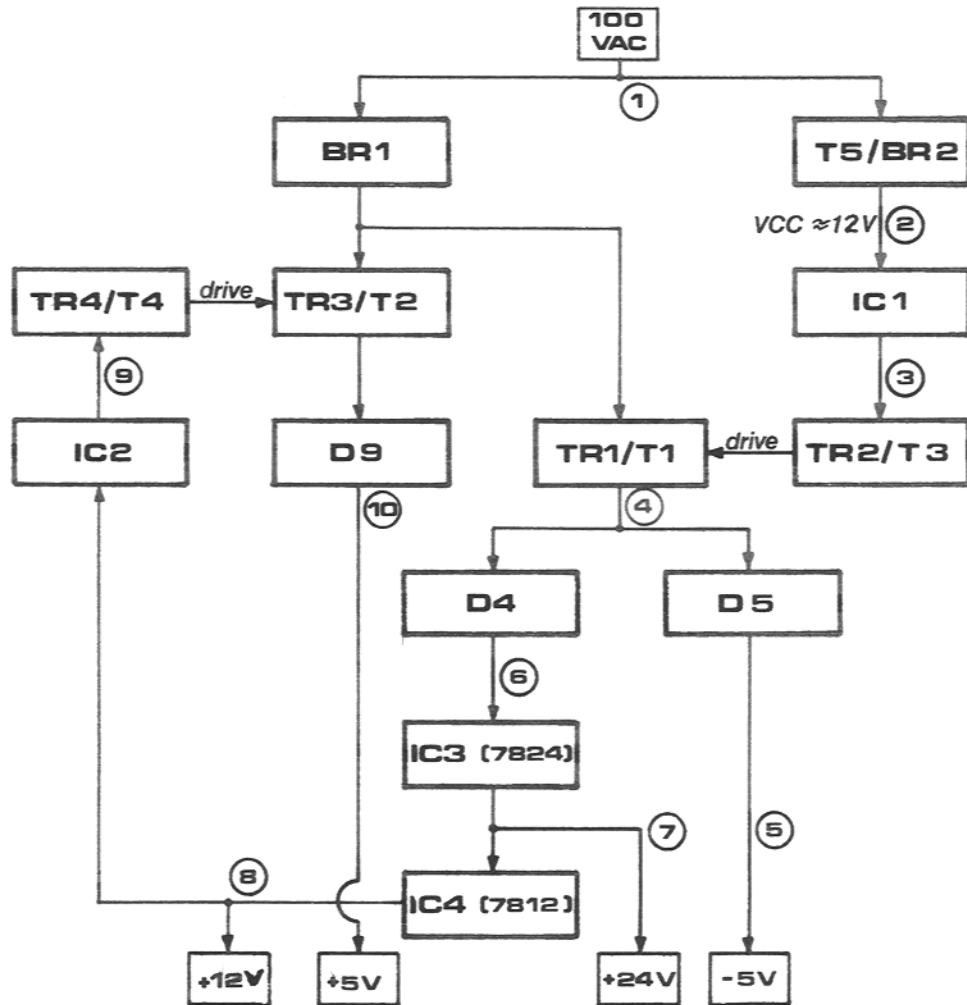
品名	Power Supply (PP-7B)
年 月 日	S.56.9.25
承 認 記 号	
材 質	
價 値	
換 算	
縮 尺	R
寸 法	
三 角 法	

記号	年月日	変更	内容	印

NeoNeo  
徳島電気株式会社

# Nintendo

## SWITCHING POWER SUPPLY Block Diagram



- ① 100VAC is stepped down and rectified
- ② VCC (12VDC) is applied to IC1; starts switching
- ③ IC1 switching drives TR2/T3, which in turn drives TR1/
- ④ Secondary of T1 output is rectified by D4 & D5
- ⑤ After filtering, D5 output is -5V
- ⑥ D4 output supplies 3 terminal regulator 7824
- ⑦ 7824 output is +24V; also drives 3 terminal regulator 7812
- ⑧ 7812 output is +12V; also VCC for IC2
- ⑨ IC2 switching drives TR4/T4; which in turn drives TR3/T2
- ⑩ D9 rectifies T2 output which becomes +5V